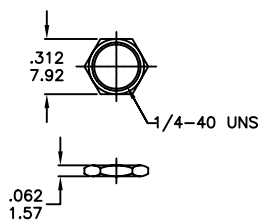
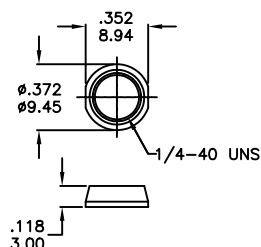
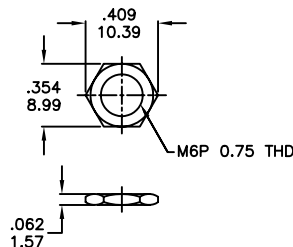




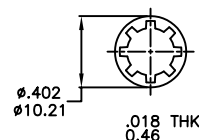
HARDWARE

1/4 NUTS HDW2


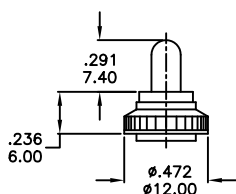
Supplied standard with B1, B3, B5, B6 and B9 options

DRESS NUT HDW3

METRIC NUT HDW6


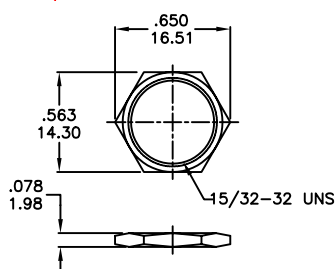
Supplied standard with B8 metric bushing

LOCK WASHER HDW11


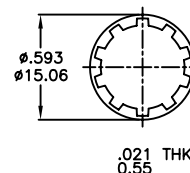
Supplied standard with B1/B3 bushing

OPTIONAL RUBBER HOOD SEALING


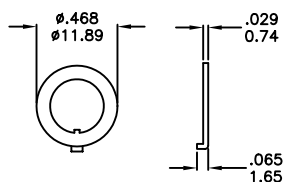
K1=Metric
E1=Inch(Std.)
for actuator T1, T2 and B1, B3, B5, B6 Bushing only

15/32 NUTS HDW4


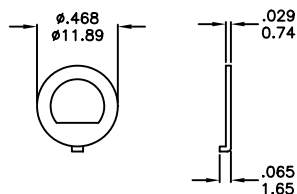
Supplied standard with B13 bushing

LOCK WASHER HDW12


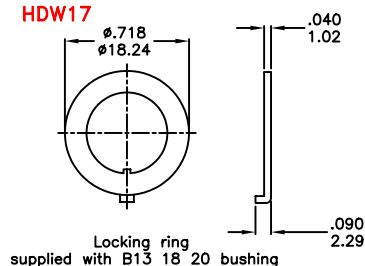
Supplied standard with B13 bushing

HDW15


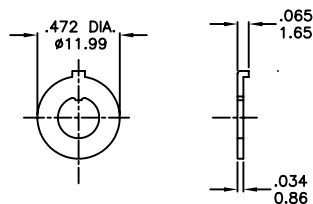
Locking ring supplied standard

HDW16


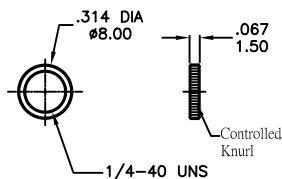
Locking ring supplied with B5 bushing

HDW17


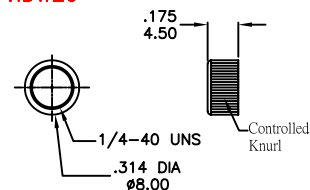
Locking ring supplied with B13 18 20 bushing

HDW18


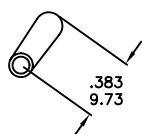
Locking ring supplied with B8 bushing

HDW19


NU-1M17

HDW20


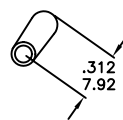
NU-1M24

OPTIONAL TOGGLE CAP
CP-1T1X


Use with T1

CAP Color :

ITEM NO	COLOR	PANTONE
1	White	
2	Black (Std)	Black C
3	Red	1797C
4	Orange	Warm Red C
5	Yellow	115C
6	Green	336C
7	Blue	2787C
8	Brown	490C
9	Gray	Cool Gray C

CP-1T2X


Use with T2

CAP Color :

ITEM NO	COLOR	PANTONE
1	White	
2	Black (Std)	Black C
3	Red	1797C
4	Orange	Warm Red C
5	Yellow	115C
6	Green	336C
7	Blue	2787C
8	Brown	490C
9	Gray	Cool Gray C