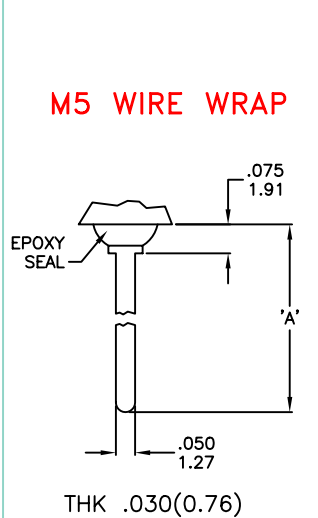
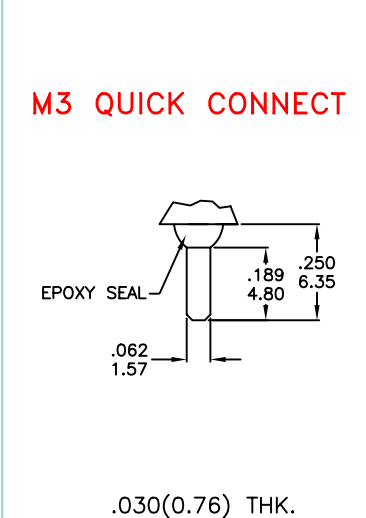
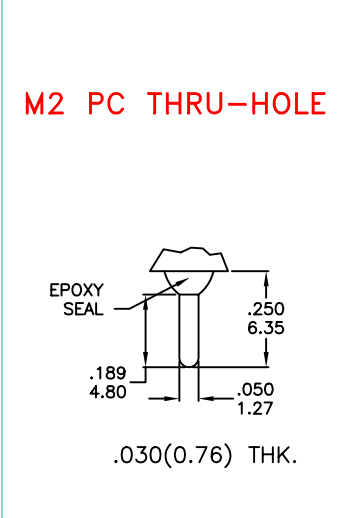
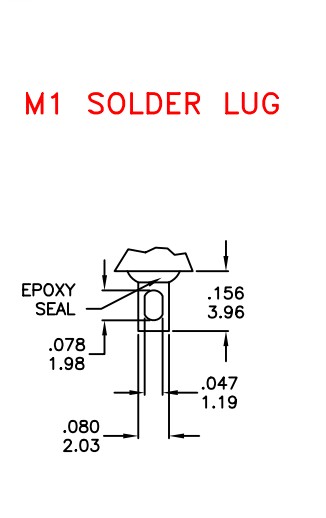




Miniature Toggle Switch 1M Series

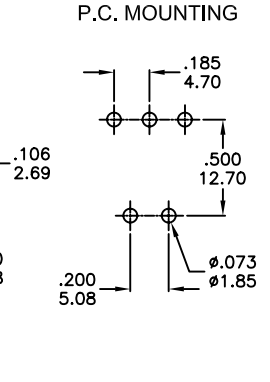
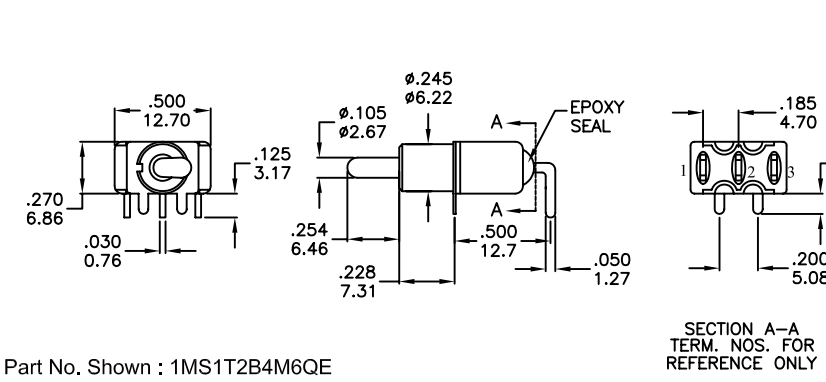
TERMINATION OPTIONS



- OTHER TERMINATION OPTIONS**
- M6 RIGHT ANGLE P.C. MOUNT
 - M7 RIGHT ANGLE P.C. MOUNT
 - VS2 VERTICAL BRACKET P.C. MOUNT
 - VS3 VERTICAL BRACKET P.C. MOUNT
 - VS5 VERTICAL BRACKET P.C. MOUNT

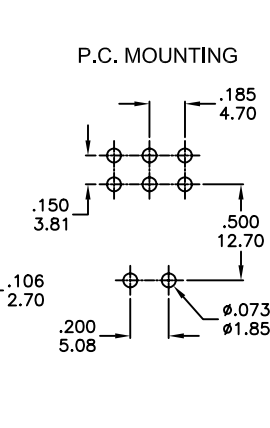
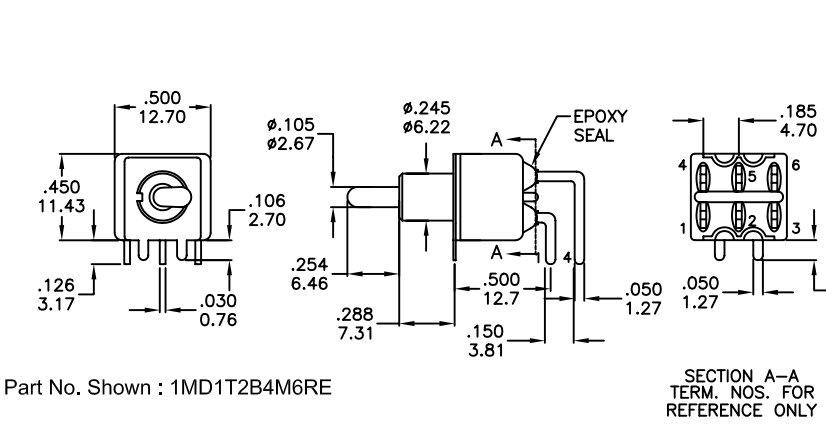
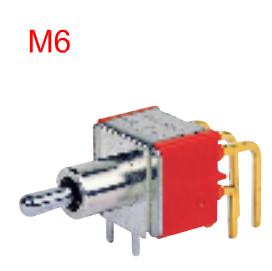
RE Mating Quick Connector
Amp P/N 60900-1

OPTION CODE	DIM. 'A'
M5-1	.736(18.70)
M5-2	.953(24.20)
M5-3	.415(10.55)
M5-4	1.062(26.97)



SPDT

Part No. Shown : 1MS1T2B4M6QE



DPDT

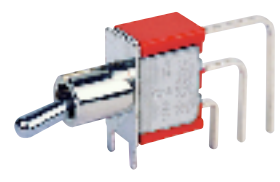
Part No. Shown : 1MD1T2B4M6RE



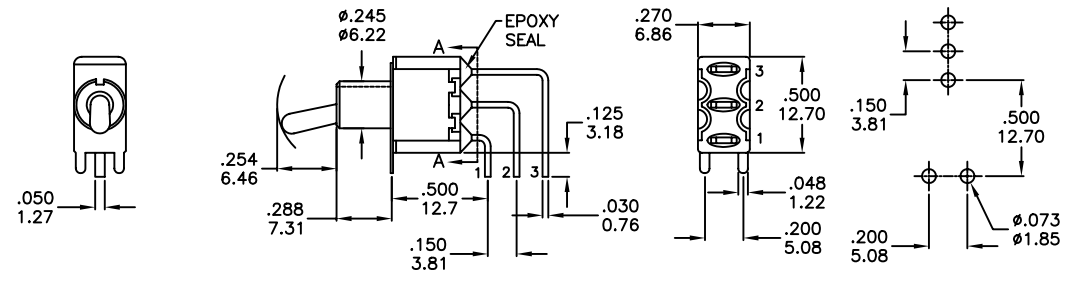
Miniature Toggle Switch 1M Series

M7

P.C. MOUNTING



SPDT

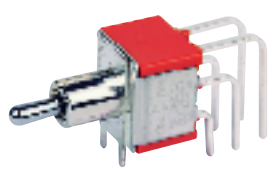


Part No. Shown : 1MS1T2B4M7QE

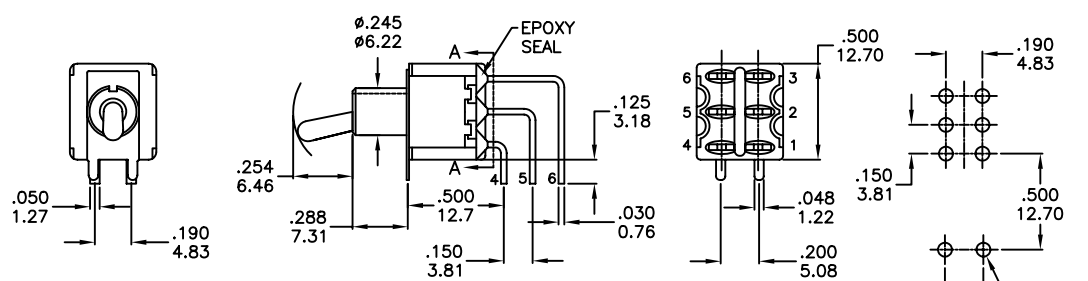
SECTION A-A
TERM. NOS. FOR
REFERENCE ONLY

M7

P.C. MOUNTING



DPDT

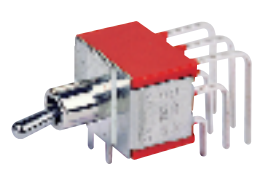


Part No. Shown : 1MD1T2B4M7QE

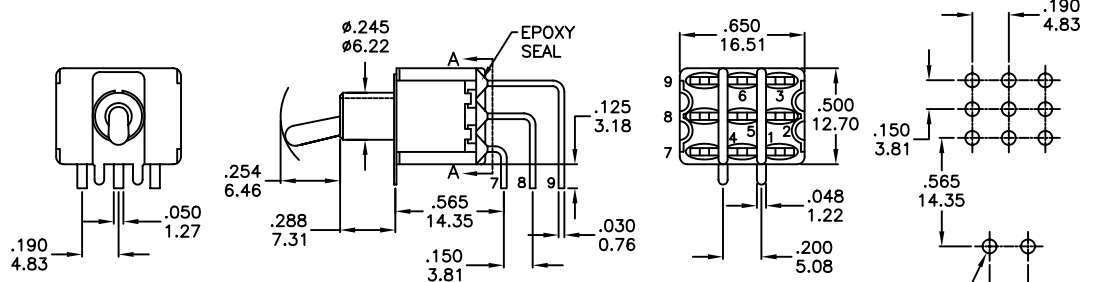
SECTION A-A
TERM. NOS. FOR
REFERENCE ONLY

M7

P.C. MOUNTING



3PDT

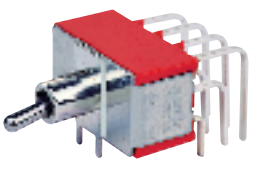


Part No. Shown : 1M31T2B4M7QE

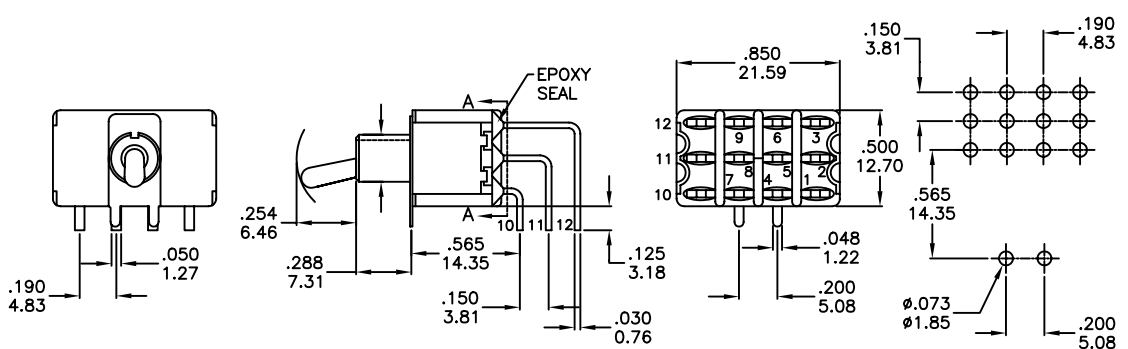
SECTION A-A
TERM. NOS. FOR
REFERENCE ONLY

M7

P.C. MOUNTING



4PDT



Part No. Shown : 1M41T2B4M7QE

SECTION A-A
TERM. NOS. FOR
REFERENCE ONLY

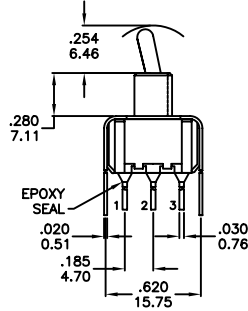
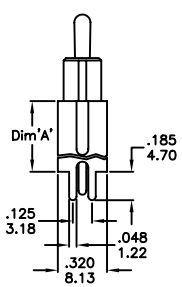


Miniature Toggle Switch 1M Series

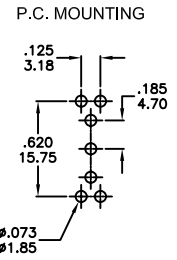
VS2-VS3



SPDT

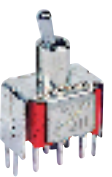


OPTION CODE	DIM. 'A'
VS2	.460 11.68
VS3	.630 16.00

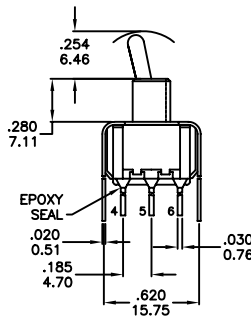
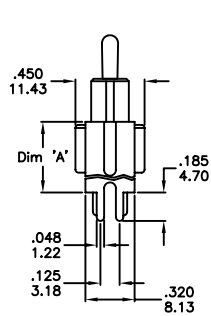


Part No. Shown : 1MS1T2B4VS2QE

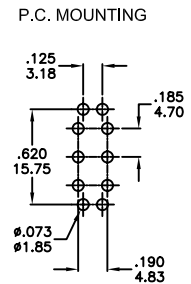
VS2-VS3



DPDT



OPTION CODE	DIM. 'A'
VS2	.460 11.68
VS3	.630 16.00

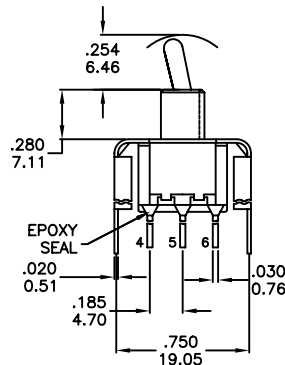
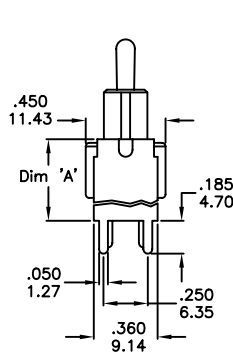


Part No. Shown : 1MD1T2B4VS3QE

VS5

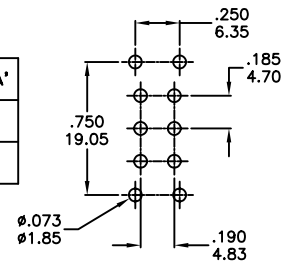


DPDT



OPTION CODE	DIM. 'A'
VS4	.460 11.68
VS5	.630 16.00

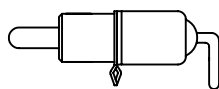
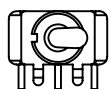
P.C. MOUNTING



Part No. Shown : 1MD1T2B4VS5QE

SNAP-IN TERMINATION OPTIONS

M6N



V2N

