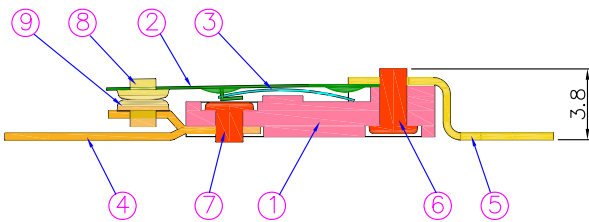
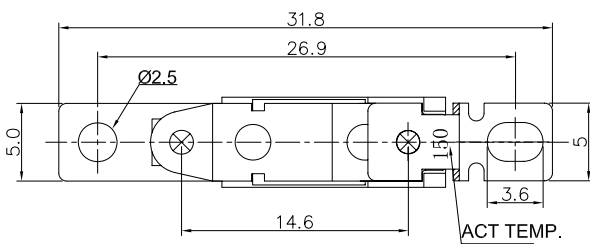




Thermostat T36 Series



T36-110-A



SPECIFICATION

- Contact Type: (Normally Closed)
- Electrical Rating: 16A 250VAC/20A 125VAC
- Contact Resistance: <math>< 50\text{m}\Omega</math>
- Operating Temp: 50°C~150°C
- Reset Temp: 30K~50K(30°C~50°C)
- Ambient Temp.(Continuous Heating): 230°C max
- Over Shoot Temp.Limit: 200°C 30 SEC.
- Temp.Tolerance: A:±5K/B:±7.5K
 Operating Life: 10000 Cycles(Resister Load)
 UL/cUL 20A125VAC/16A250VAC
 Operating Life: 10000 Cycles(16A250V/125VAC)
 ENEC10 30000 Cycles(10A250V/125VAC)
- Weight: 0.95g

	PARTS	MATERIAL
1	Body	Al ₂ O ₃
2	Movable arm	Beryllium copper
3	disc	Bimetal
4	terminal	Brass
5	terminal A1	Brass
6	Long Rivet	Copper
7	Short Rivet	Copper
8	contact-R	Silver alloy
9	contact-F	Silver alloy

FEATURES

- Competitive Price & Small Size.
- Excellent Heat Transmission & Automatic Reset.
- Fast Response To Radiant Heat.

APPLICATIONS

- Hair Dryer, Air Heater, Dish Dryer.
- Heater-Fan, Convector, Panel, etc.

HOW TO ORDER

MODEL CODE (FULL CODE)

T36 - 110 - A

Grade of Tolerance A=± 5K B=± 7.5K

Operating Temp. 110 °C

Model : T36