

SPECIFICATIONS

- Electrical Rating : 5A 250VAC
- Mechanical life: Over 100000 cycles
- Electrical life: Over 50000 cycles
- Contact resistance: <50mΩ
- Insulation resistance: >1000MΩ
- High voltage resistance: >2000VAC 1 min.
- Ambient temperature: -20~55°C
- IP Degree: IP65,IK09
- Torque: 5~14Nm
- Operation Pressure: About 4N
- LED Life: over 40000 hours

MATERIALS

- Body/Button: Stainless Steel
- Base: PA
- Contact: Silver alloy

HOW TO ORDER

LAS1GQ

Series & Switch Diameter

LAS1GQ 19mm

F

Switch Shape

F Flat  
H High

\*H type is only for E LED type

11

Contact Configuration

11 1NO1NC

□

Function

□ Momentary  
Z Latching  
(□ : no letter)

D

LED Type

D Dot  
E Ring

R

LED Color

R Red  
G Green  
Y Yellow  
O Orange  
B Blue  
W White

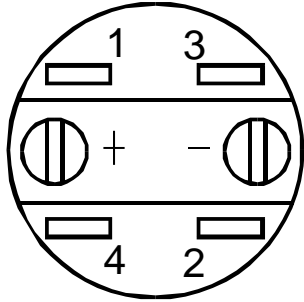
24V

LED Voltage

24V 24VDC

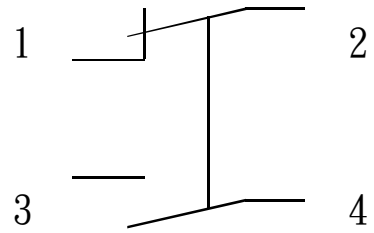
**Switch Configuration**

**Terminal Description**

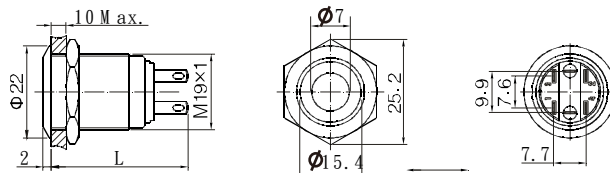


T1,T2 : NC  
T3,T4 : NO

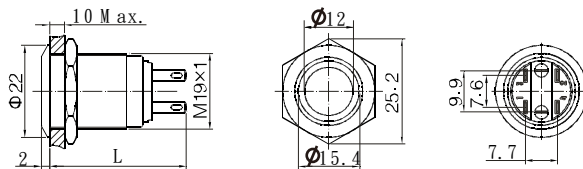
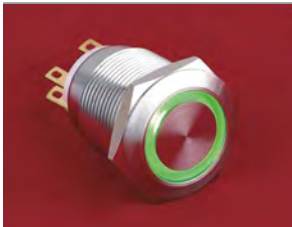
**Switching Operation**



**Dimension of LAS1GQF series**



L: 33 mm(unlocked)  
39 mm(locked)



L: 33 mm(unlocked)  
39 mm(locked)